

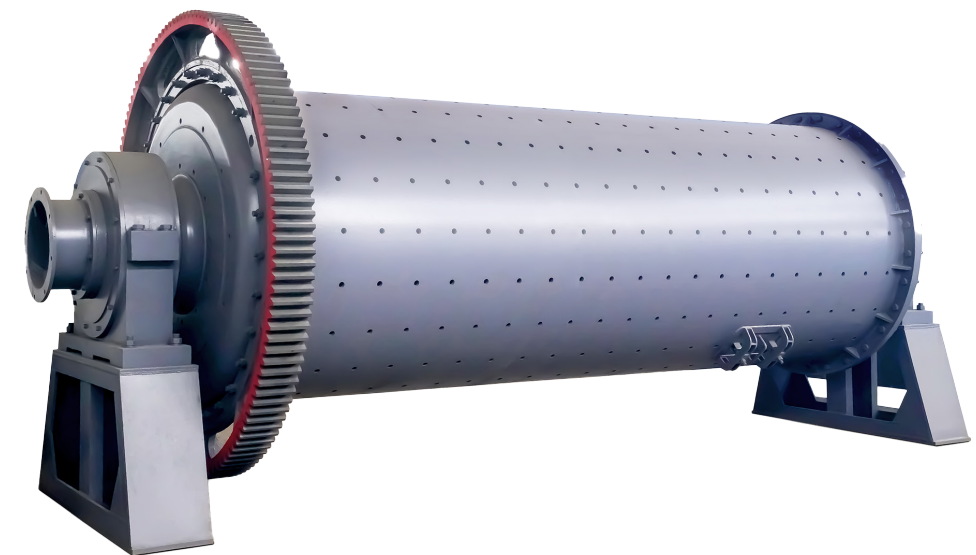
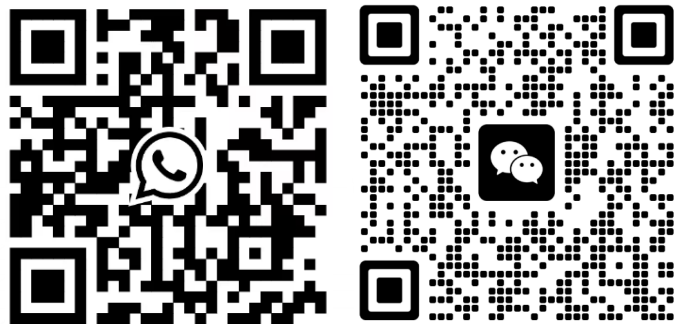


WhatsApp: +86 13524175811

Website: www.mrcrushermill.com

Email: susana@shmmachinery.com

No. 9875, Hunan Road, Nanhui Industrial Park,
Huinan Town, Pudong New Area, Shanghai



MQ Ball Mill

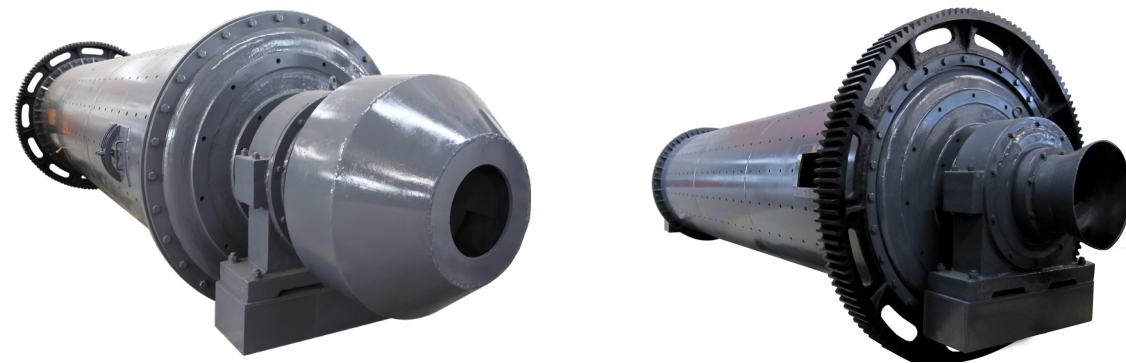
SHANGHAI MOUNTAIN RIVER MACHINERY CO.,LTD

CRUSH THE STONES, CONSTRUCT THE WORLD

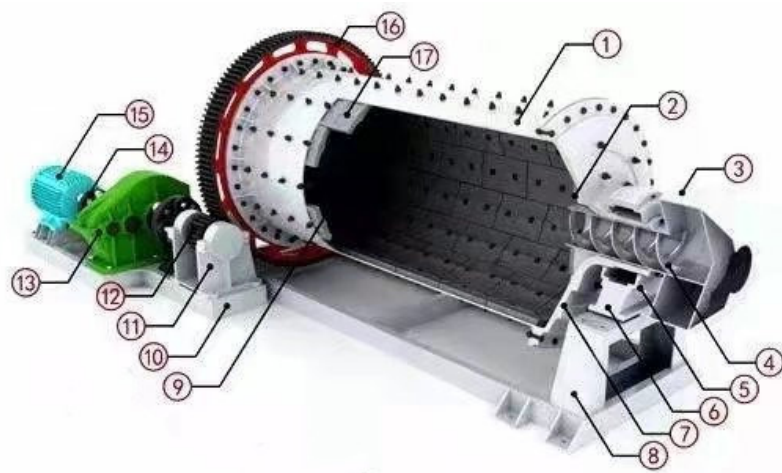
MQ Ball Mill

Introduction

MQ ball mill is an efficient machinery for powder making. It is mainly used to the beneficiation equipment, ceramics, chemical and cement industry etc. There are two types ball mills, the dry type and the wet type. In recent years, the bearing transmission energy saving ball mill is newly developed, which can save 25-30% energy.



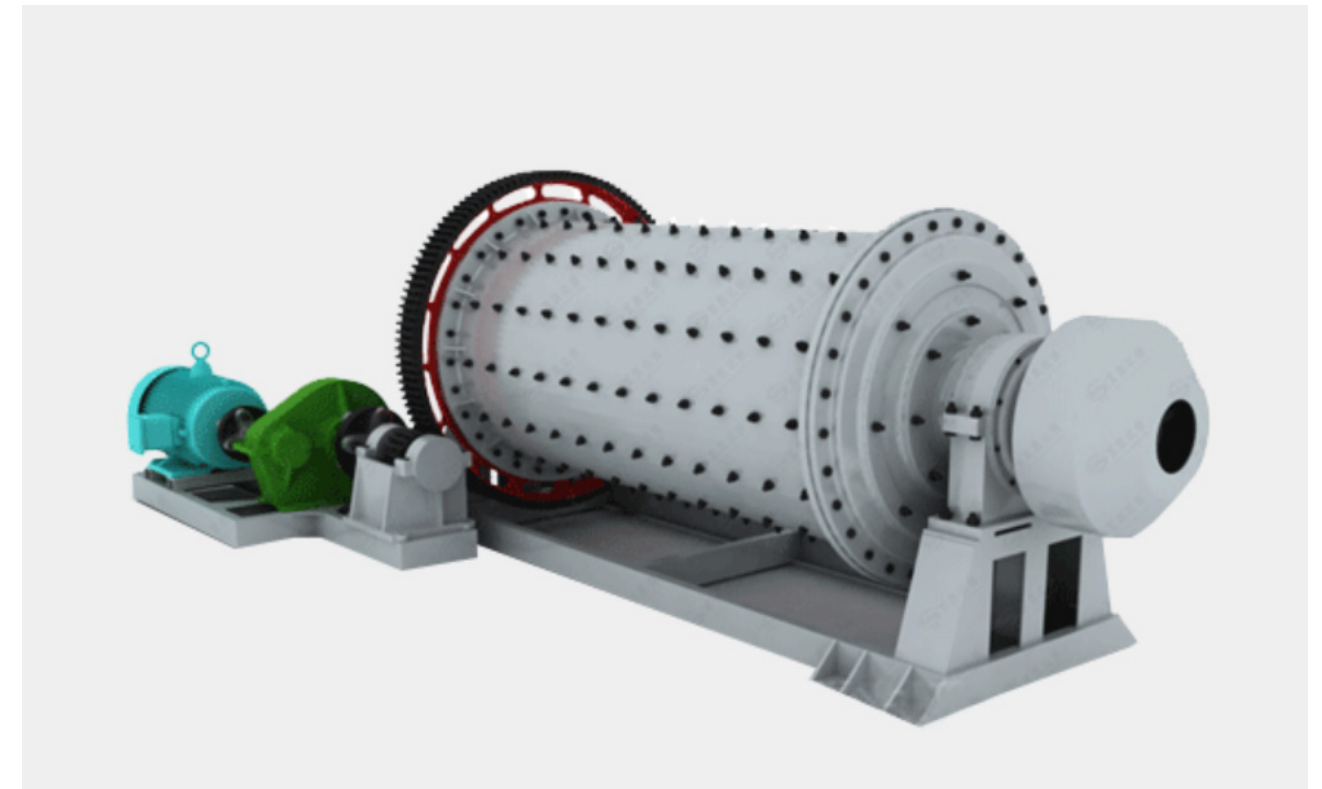
Main Structure



1. Cylinder
2. Slate
3. Feeder
4. Feed screw
5. Bearing cap
6. Bearing seat
7. Roller
8. Bracket
9. Board
10. Drive seat
11. Bridge bearing seat
12. Small Gear
13. Reducer
14. Coupling
15. Motor
16. Big gear
17. Large liner

Working Principle

The main body of the ball mill is a revolving cylinder, both ends are equipped with end covers with hollow shafts, the hollow shafts are supported by the main bearings, and the whole mill rotates under the drive of the transmission device. Due to the action of inertial centrifugal force, the grinding body is attached to the lining surface of the inner wall of the mill and rotates together with it. After being brought to a certain height, it falls freely by gravity. The grinding body has a cyclic movement of rising and falling in the rotating mill, resulting in sliding and rolling, resulting in the grinding action between the grinding body, the lining plate and the material to be ground to make the material fine. In order to protect the cylinder from the direct impact of the ball and the sliding friction of the steel ball and the material, the inner wall of the cylinder is also equipped with a lining plate.



Technical Parameters

Model	Power (kW)	Thickness (mm)	Ball load (t)	Weight (t)
Φ900*1800	18.5	10	1.5	4.6
Φ900*3000	22	10	2.7	5.6
Φ1200*2400	30	12	3	12
Φ1200*3000	37	12	3.5	12.8
Φ1200*4500	55	12	5	13.8
Φ1500*3000	75	16	7.5	15.6
Φ1500*4500	110	16	7.5	21
Φ1500*5700	130	16	12	25
Φ1830*3000	130	18	11	28
Φ1830*4500	155	18	15	32
Φ1830*6400	210	18	21	34
Φ1830*7000	245	18	23	36
Φ2100*3000	210	20	19	43
Φ2100*4500	245	20	24	46
Φ2100*7000	280	20	26	50
Φ2200*6500	380	22	35	52.8
Φ2200*7000	380	22	35	54
Φ2200*7500	380	22	35	56
Φ2400*3000	245	24	27	60
Φ2400*4500	320	24	30	65
Φ2400*7000	475	24	54	71
Φ2700*3600	400	25	39	83
Φ2700*4000	400	25	40	85
Φ2700*4500	430	25	48	89
Φ2700*6000	630	25	53	93
Φ3200*3600	560	30	52	120
Φ3200*4500	800	30	65	125
Φ3200*5400	800	30	81.6	130
Φ3000*11000	1250	30	95-100	155
Φ3600*4000	800	35	75	185

Customer Site

