



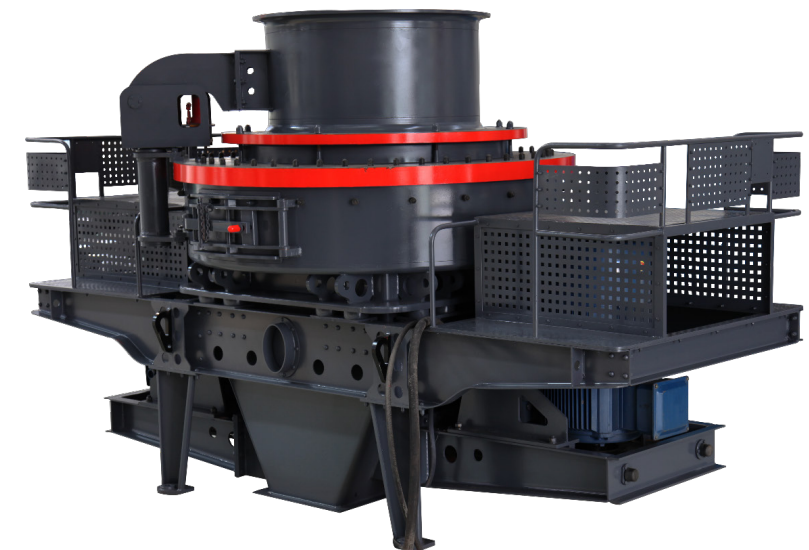
Whatsapp: +8615800956935

Email: [susana@shmmachinery.com](mailto:susana@shmmachinery.com)

Website: [www.mrcrushermill.com](http://www.mrcrushermill.com)

Online Shop: [shmmachinery.en.made-in-china.com](http://shmmachinery.en.made-in-china.com)

Address: No. 9875, Hunan Road, Nanhui Industrial Park,  
Huinan Town, Pudong New Area, Shanghai



## VSI5X Vertical Shaft Impact Crusher

SHANGHAI MOUNTAIN RIVER MACHINERY CO.,LTD

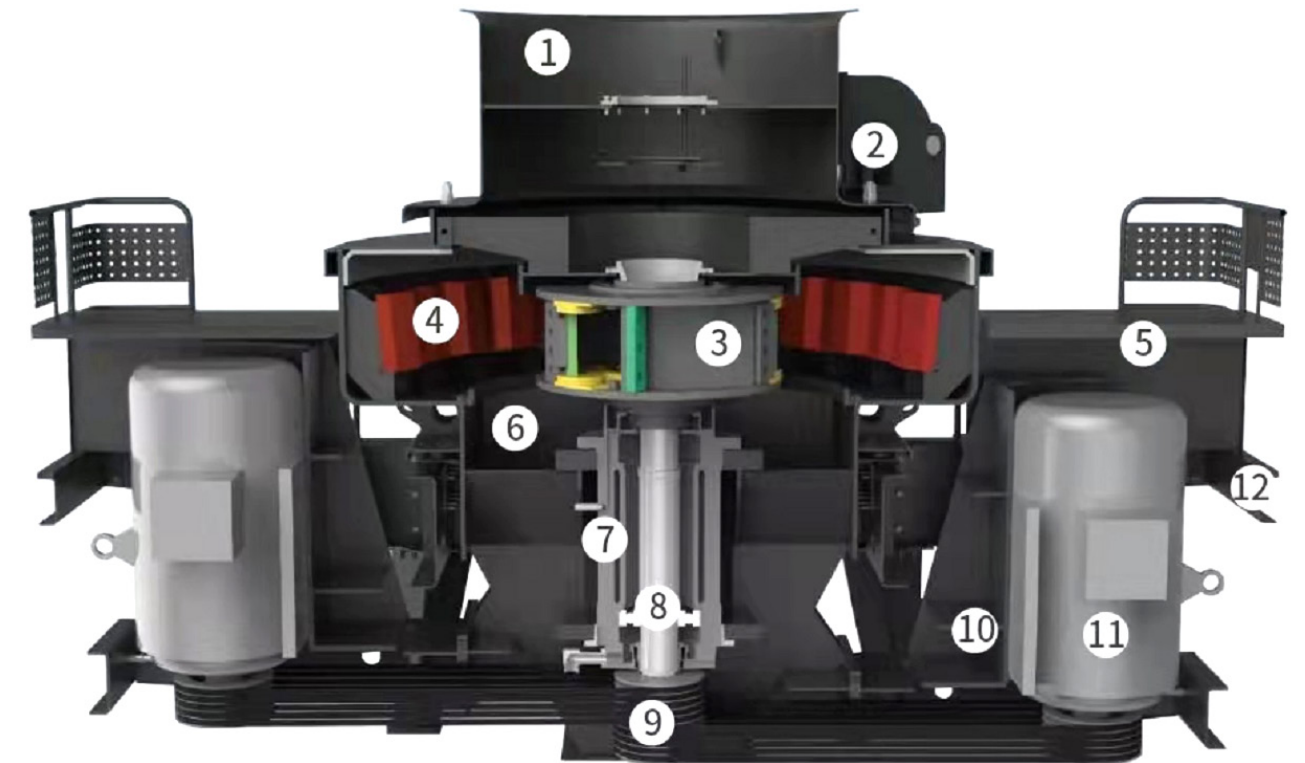
CRUSH THE STONES    CONSTRUCT THE WORLD



VSI5X vertical impact crusher is developed and designed on the basis of the previous generation of VSI vertical shaft impact crusher. It adopts high-speed closed impellers to speed up materials, with stone against iron or stone against stone , central feeding adjustment and waterfall feeding available to configure according to user's conditions to meet the different process requirements, such as material fine and super-fine crushing, machine-made sand processing and aggregate shaping.

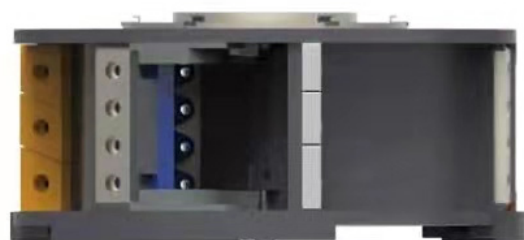
## Main Structure

1. Hopper	2. Hydraulic Jack Device	3. Rotor	4. Guard Plate
5. Pedal Frame	6. Frame	7. Bearing Cylinder	8. Transmission Shaft
9. Pulley	10. Motor Seat	11. Motor	12. Bracket

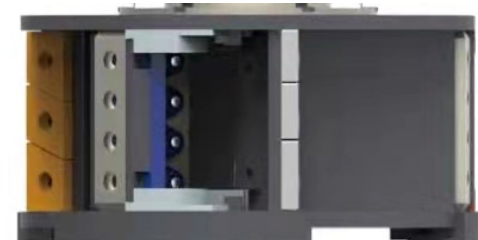


## Main Features

- Hydraulic drive cover device makes the maintenance more convenient.
- With the unique feeding crusher structure, it is convenient to realize the "stone crushing stone " mode and "stone crushing iron" mode. It can produce sand and cubic shape aggregates.
- High quality materials and advanced technology can improve the equipment quality and appearance and ensure a low failure rate.
- VSI5X rotors adopt the design of a deep cavity, which can have more materials pass through to obtain higher capacity than ordinary rotors under the same specifications.
- The equipment is provided with a light oil lubrication device and an air cooling system, as well as a PLC intelligent system. So it is able to realize fully automatic control of the equipment lubrication and reliably guarantee the equipment operation.



Normal Rotor

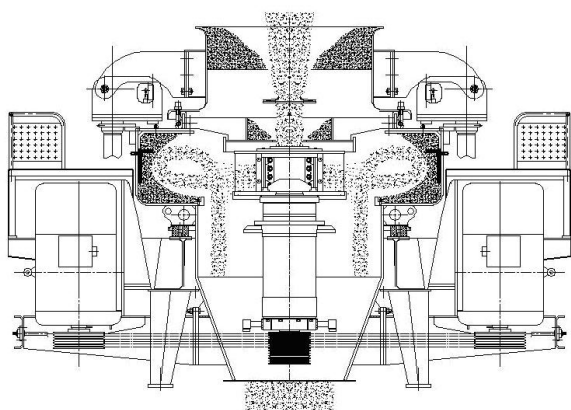


Deep cavity Rotor

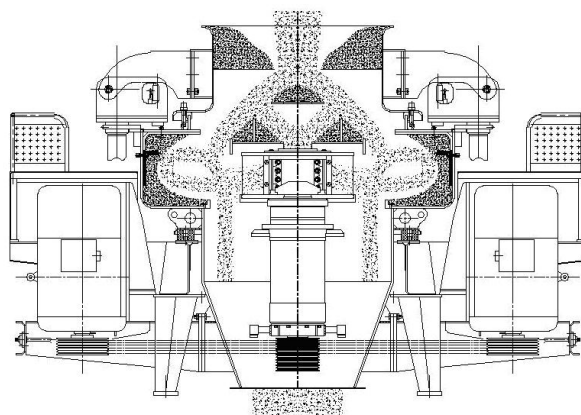
## Technical Parameters

Model	Capacity (t/h)		Max. Feeding Size (mm)	
	Feed both at Center and at Sides	Feed at Center	Soft Material	Hard Material
VSI5X7615	150-280	70-140	<35	<30
VSI5X8522	240-380	120-200	<40	<35
VSI5X9532	350-540	180-280	<45	<40
VSI5X1145	500-640	250-360	<50	<45

	Rotation Speed (r/min)	Double Motor Power (kw)	Overall Dimension (mm)
VSI5X7615	1700-1900	110-150	4100 × 2330 × 2300
VSI5X8522	1500-1700	180-220	4140 × 2500 × 2700
VSI5X9532	1300-1510	260-320	4560 × 2600 × 2900
VSI5X1145	1100-1310	400-440	5100 × 2790 × 3320



Feeding at Center



Feeding both at Center and at Sides